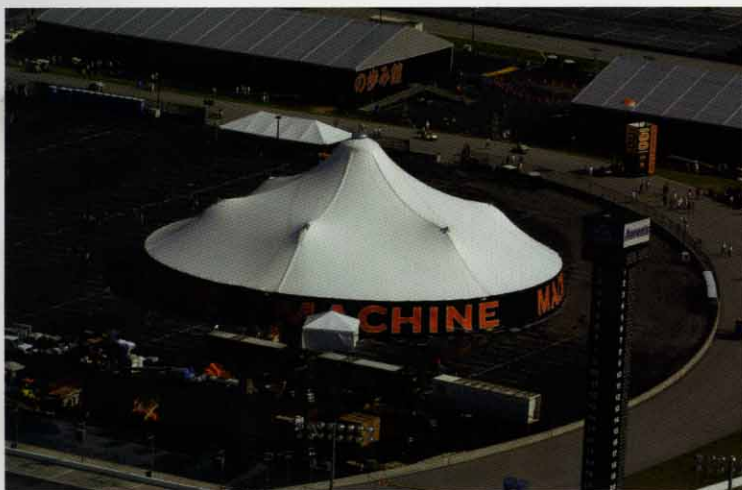




THE MAGIC OF
TENTS TRANSFORMING SPACE

Alejandro Bahamón

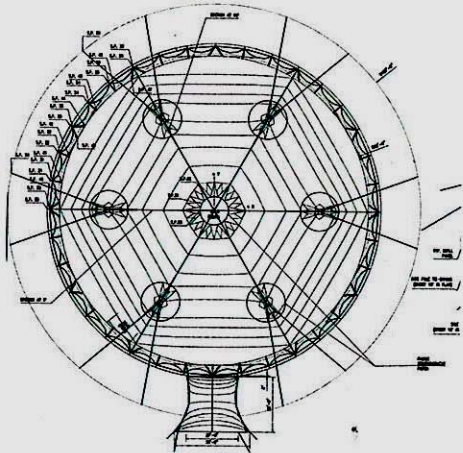


MACHINE TENT

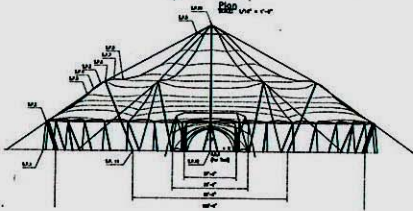
The Machine Tent is a large tent that is part of a much larger traveling exhibition mounted in 2002 to celebrate the 100th anniversary of the Harley Davidson Motor Company. The different parts of the exhibition were housed in several tent-like structures, but this is the only one whose design celebrated the grandeur of the Harley Davidson. It had to be a portable structure incorporating various formal elements that minimized the amount of labor and equipment needed as it had to be repeatedly set up and dismantled. At the same time, it presented another challenge to the creators: the entire design, engineering, and manufacturing process had to take just 20 weeks.

The distinctive shape of this vast tent was conceived as an interpretation of the traditional Harley motorcycle. It had to accommodate varying numbers of units in a bright, ample space. Dominating this circular space is a large central mast which bears most of the weight. Each of the tent's six segments is supported by a secondary mast. This arrangement gives the tent its unique shape. The structure was designed to be put up with minimal effort: internal motors hoist the masts, and the six pieces of exterior fabric are easy to handle.

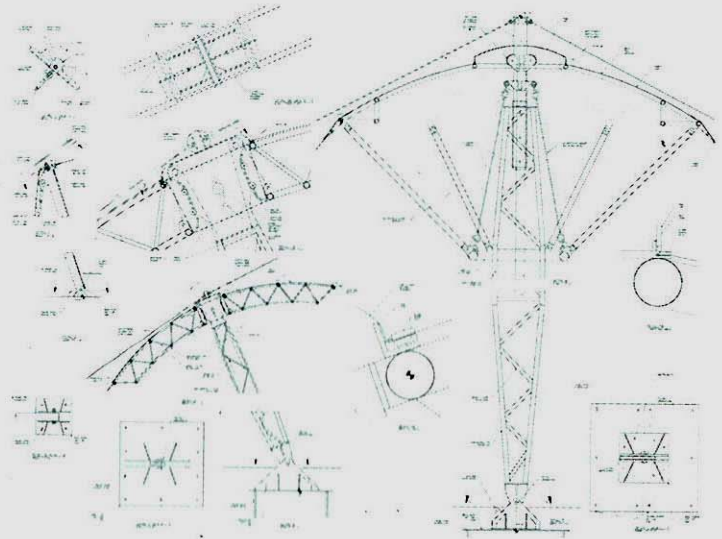




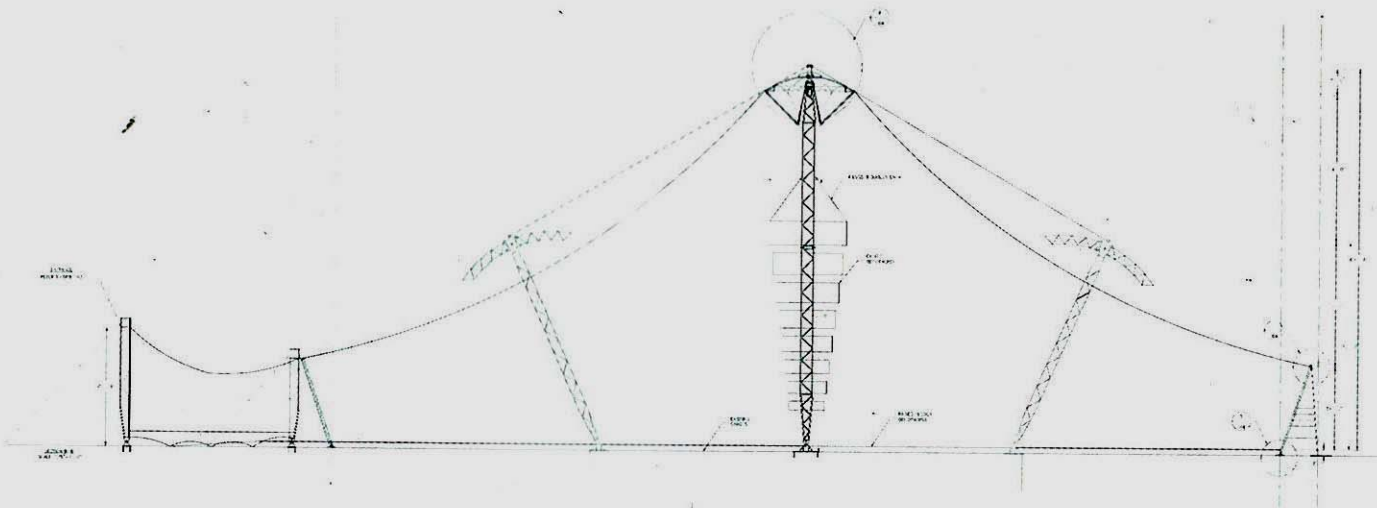
Plan



Elevation



Structural diagram



Section